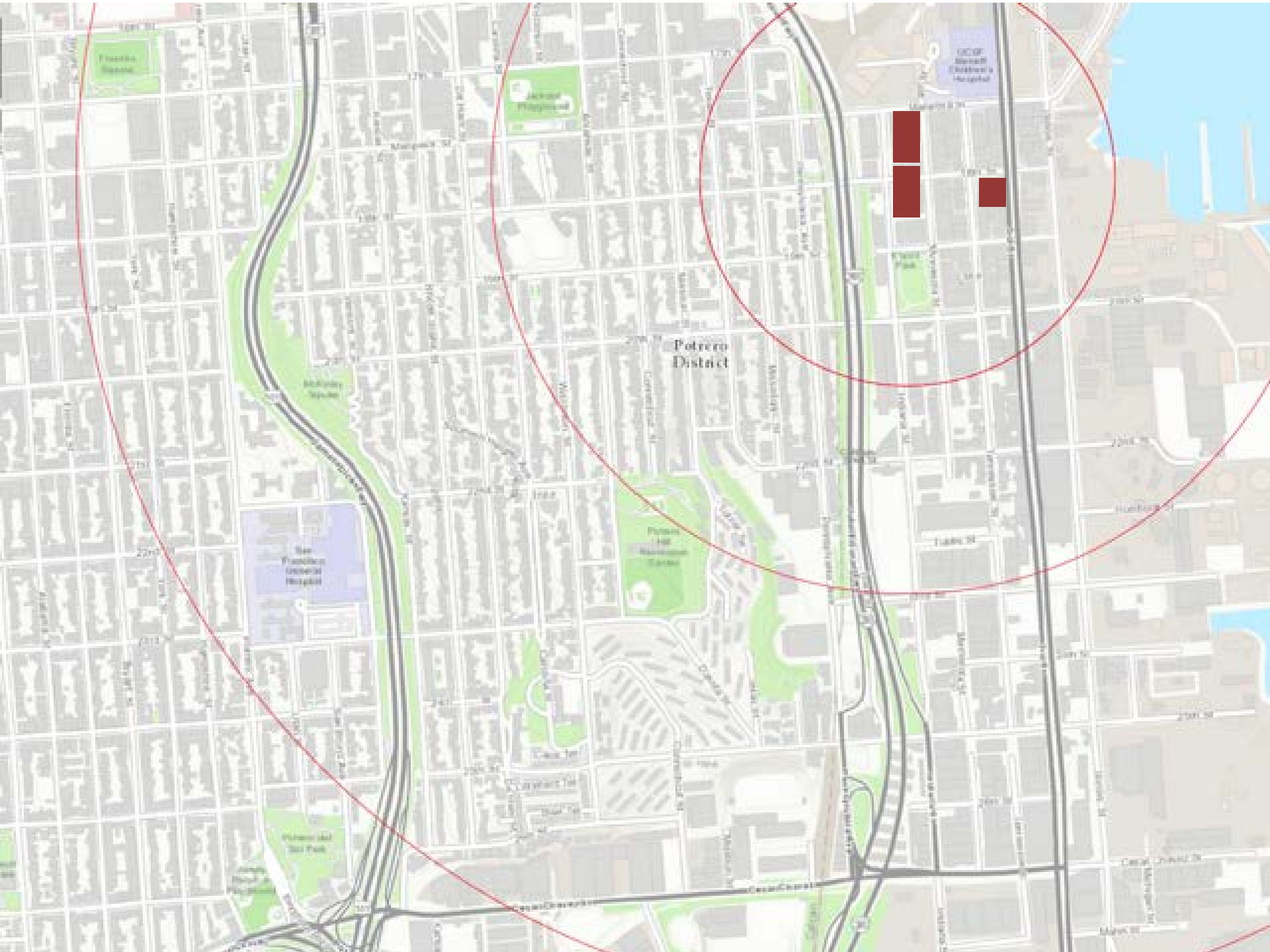


Neighbor Presentation
Roadmap to UCSF Projects

Dogpatch & Potrero Hill Neighborhood Working Group
February 22, 2017



Potrero District

San Francisco General Hospital

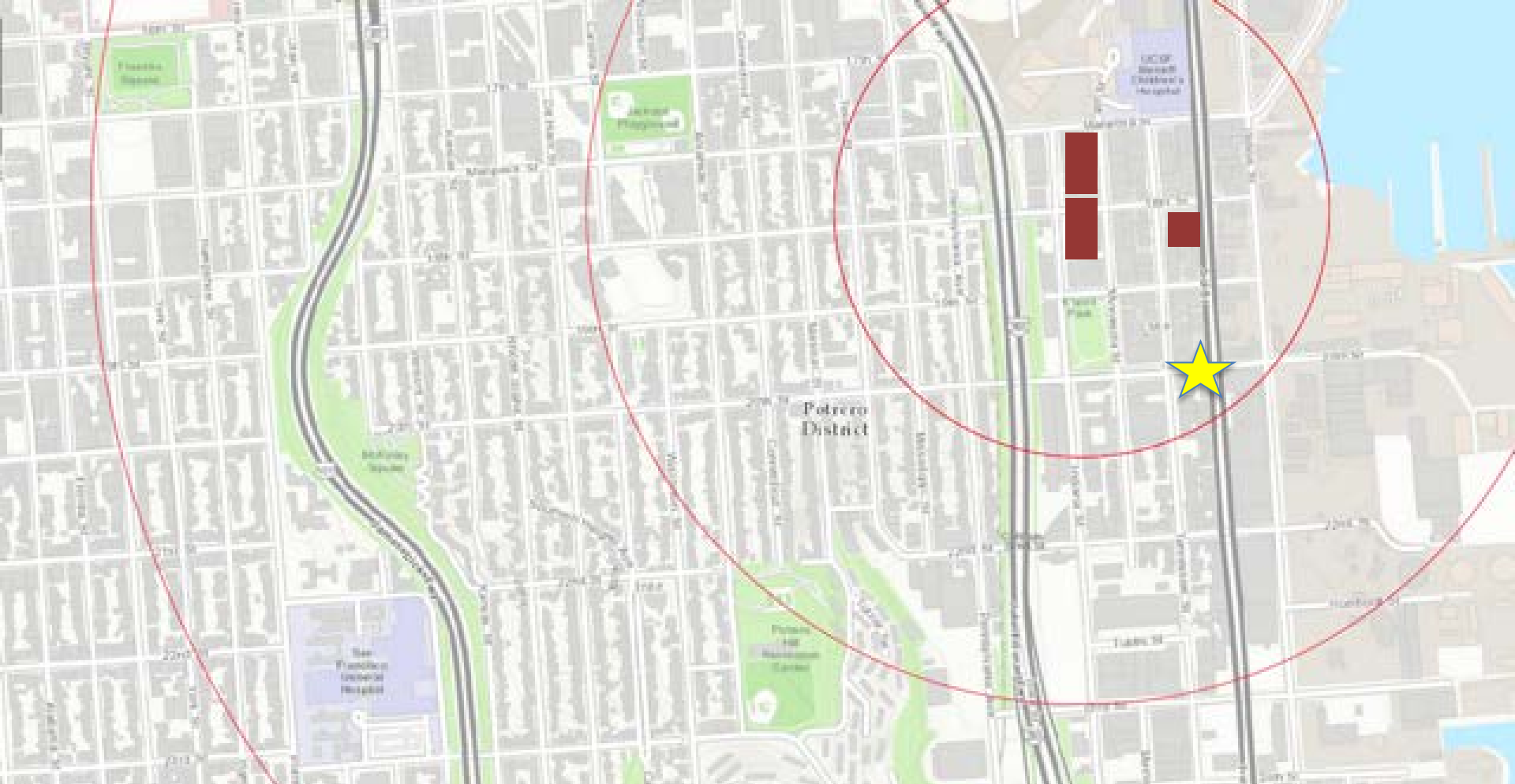
Potrero Hill Recreation Center

UCSF Benioff Children's Hospital



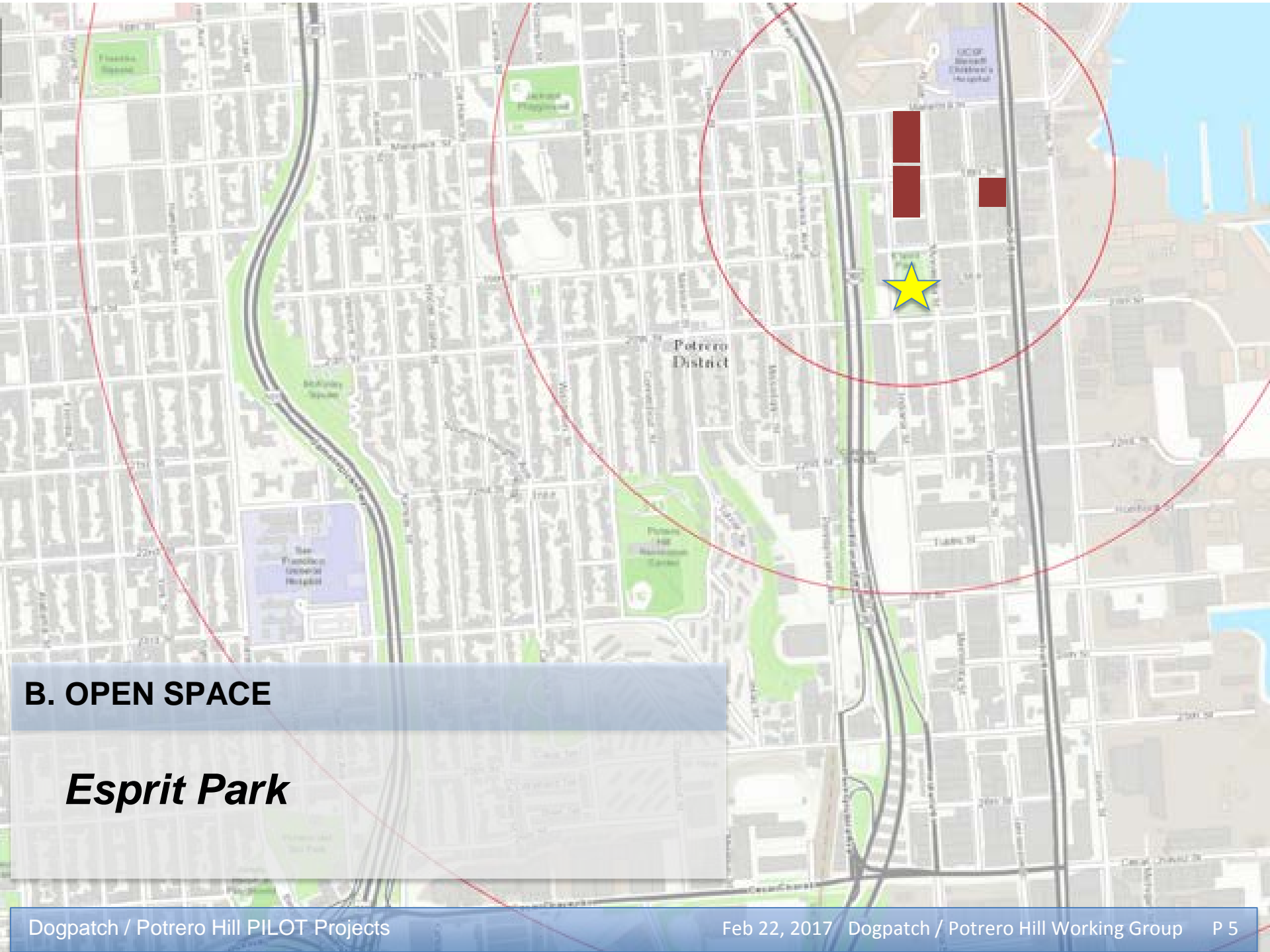
O. TRANSPARENCY & COOPERATION

1. DTSC Participation/Community Liaison for Remediation and Construction
2. Expanded Local Hire/Permanent Jobs
3. Effective Participation in Transportation Demand Management Program
4. Expanded Indigent Care
5. Identify planned use for all 5 UCSF Dogpatch properties, incl. 777 Mariposa
6. No further intrusion into Dogpatch
7. Rescind Biomedical Overlay



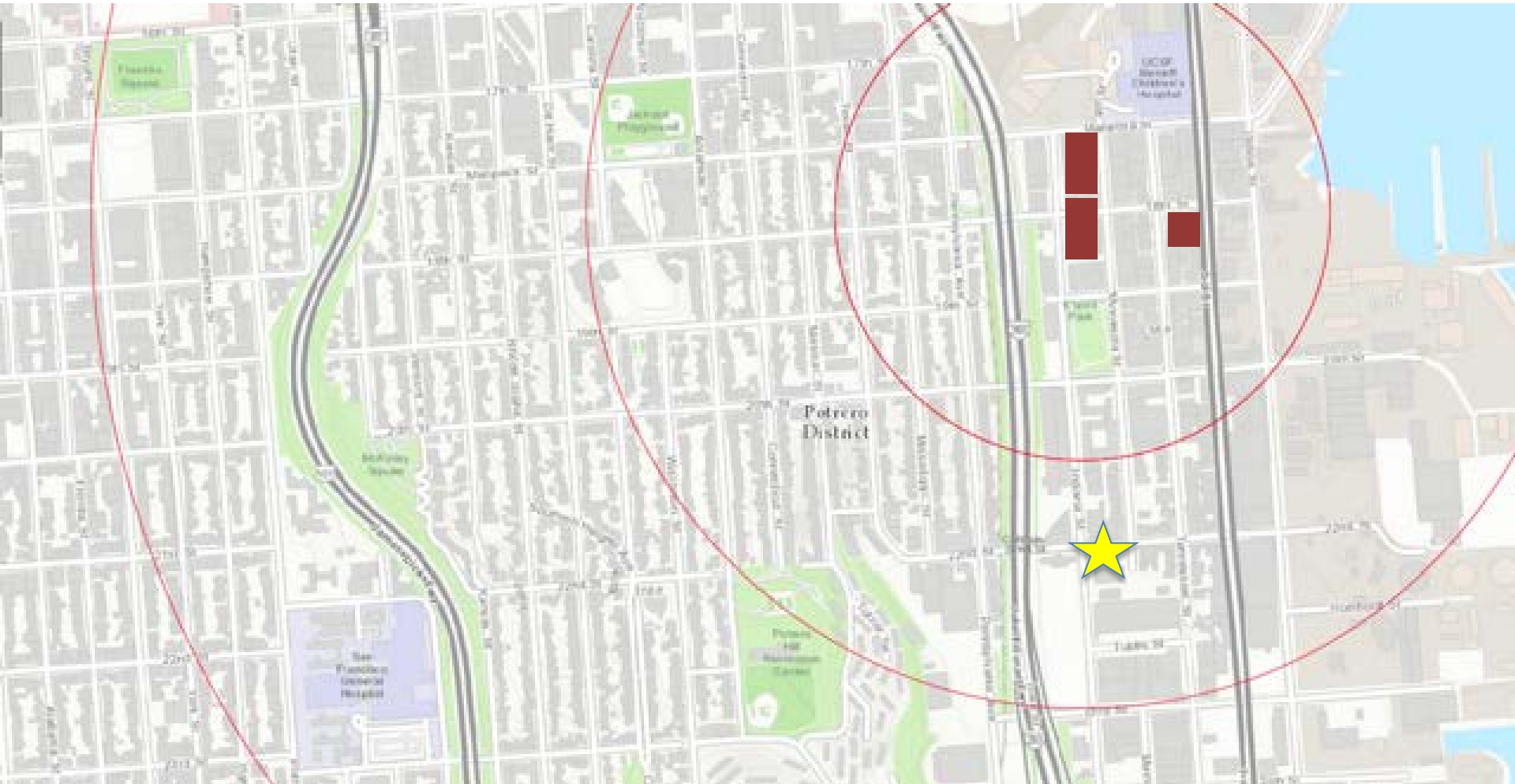
A. COMPLETE NEIGHBORHOOD SERVICES

Community Center / The Hub



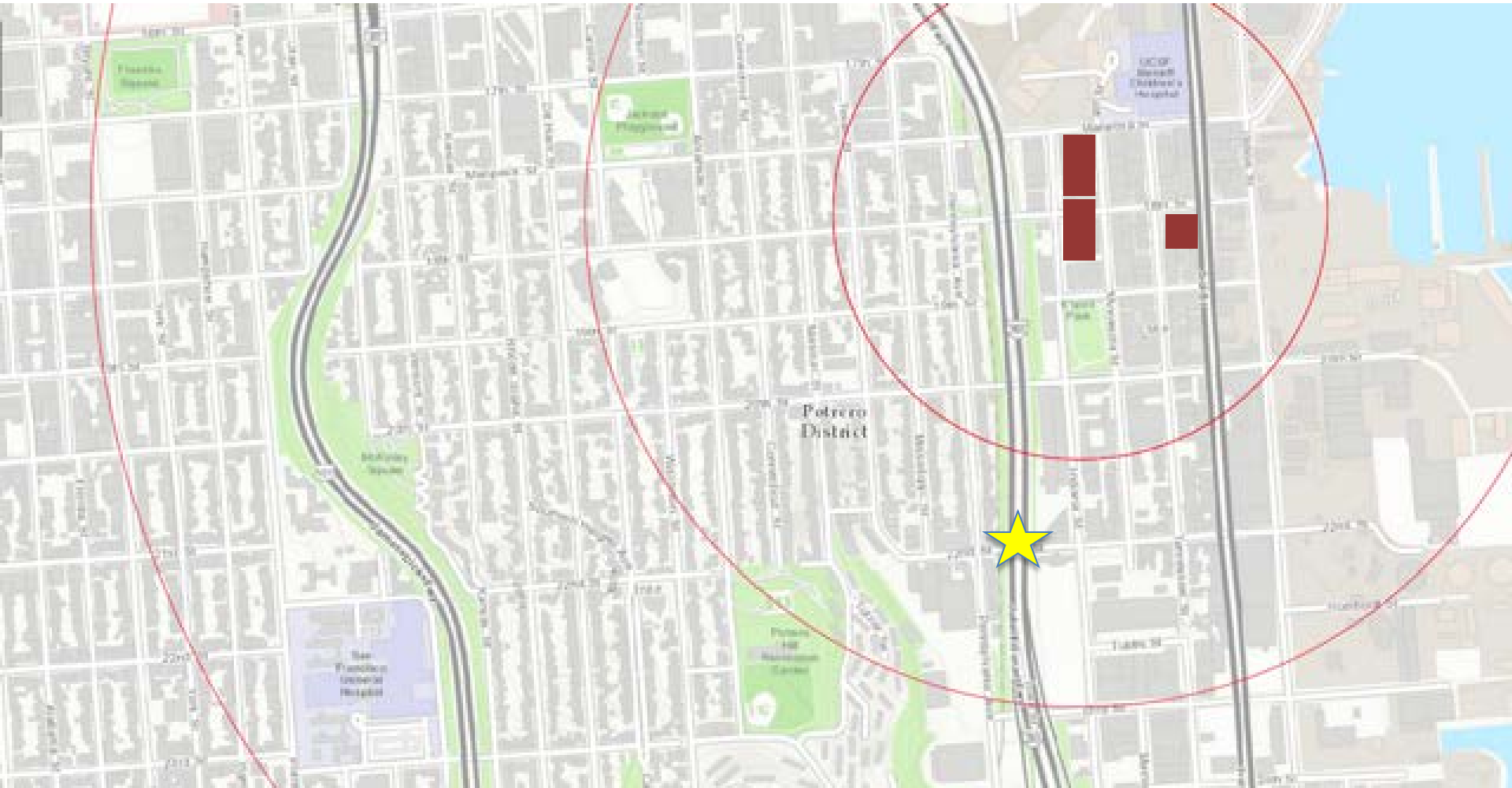
B. OPEN SPACE

Esprit Park



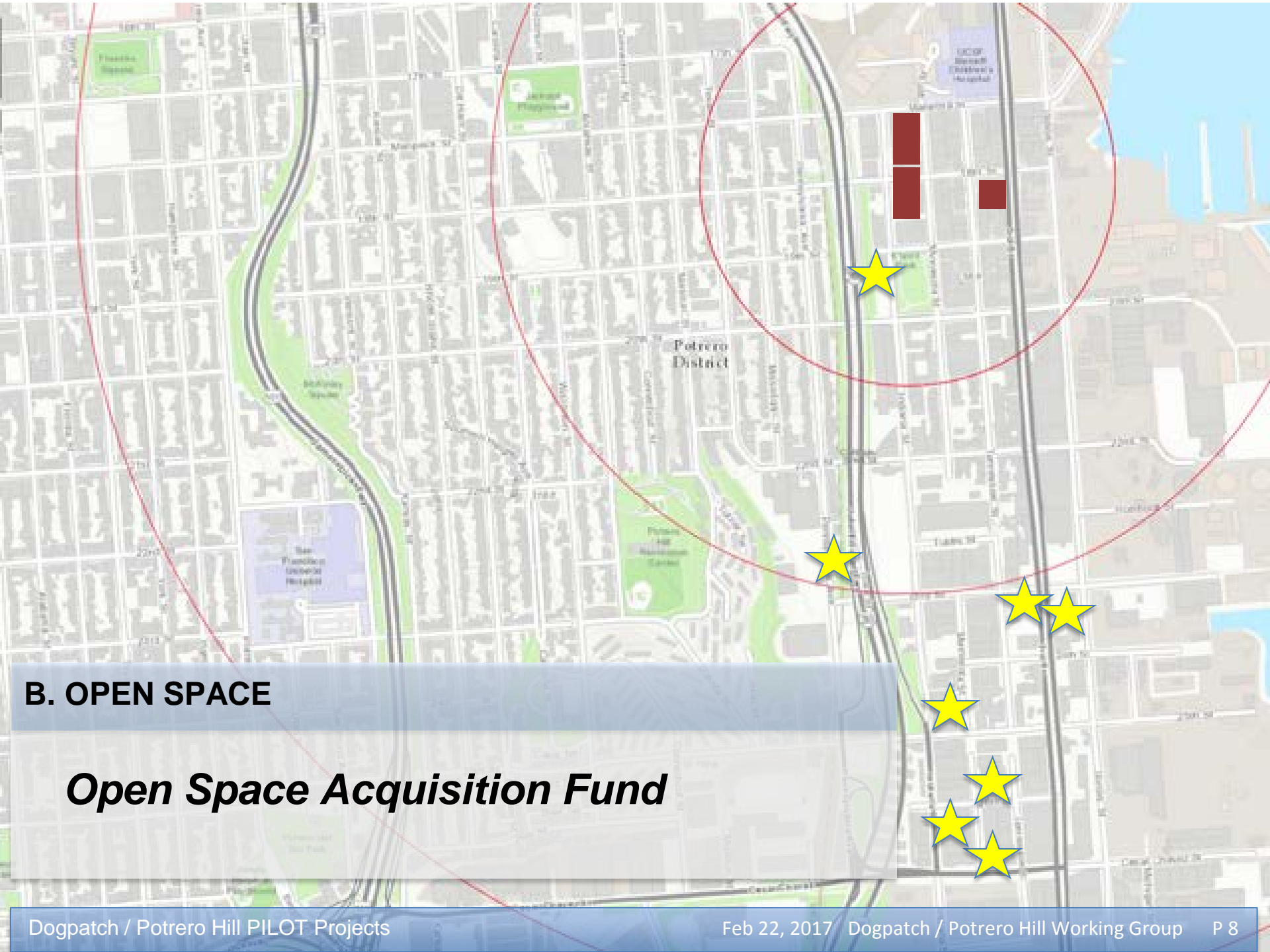
B. OPEN SPACE

Woods Yard @ 22nd Street



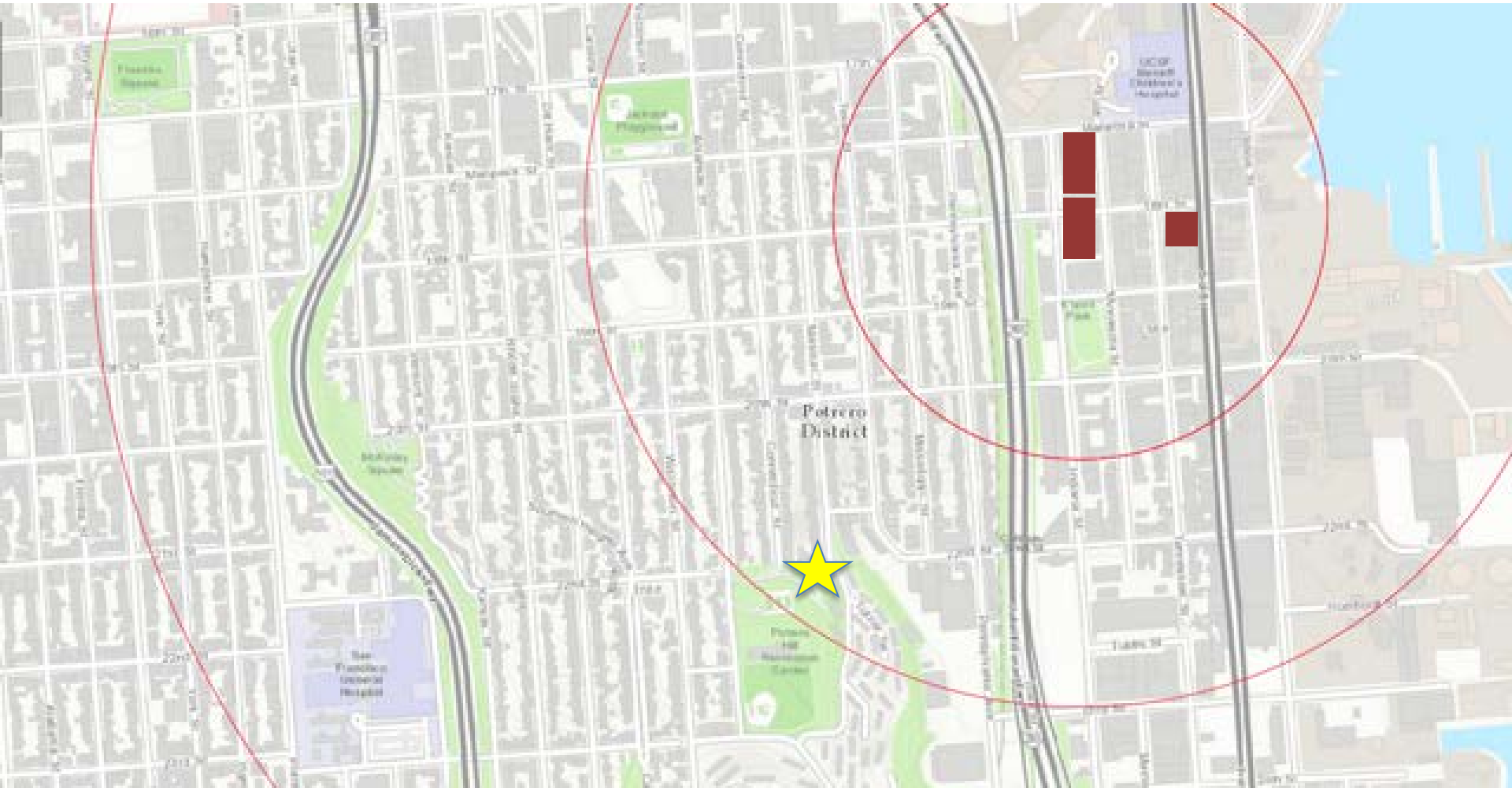
B. OPEN SPACE

Caltrain Gateway along 22nd Street



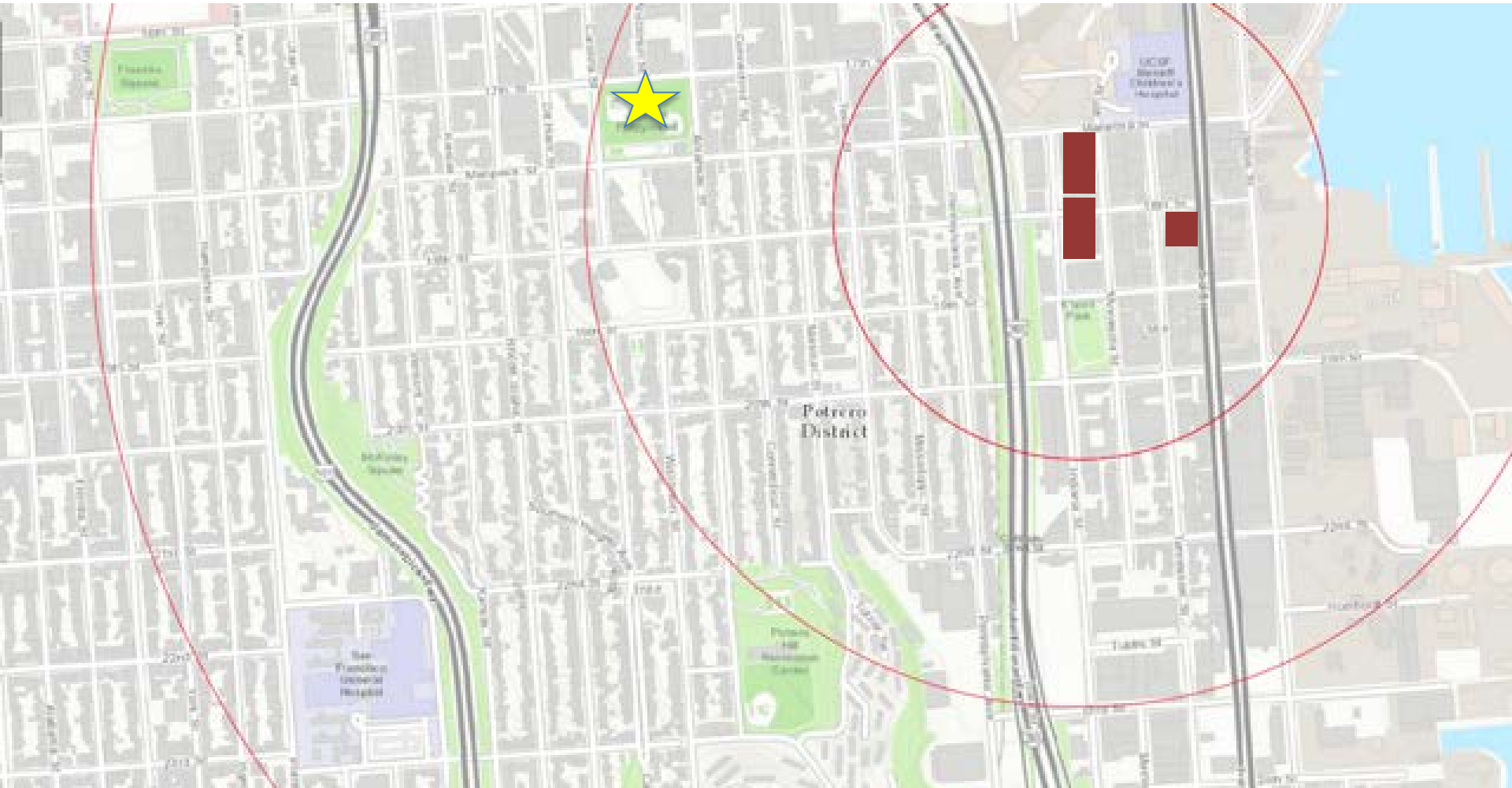
B. OPEN SPACE

Open Space Acquisition Fund



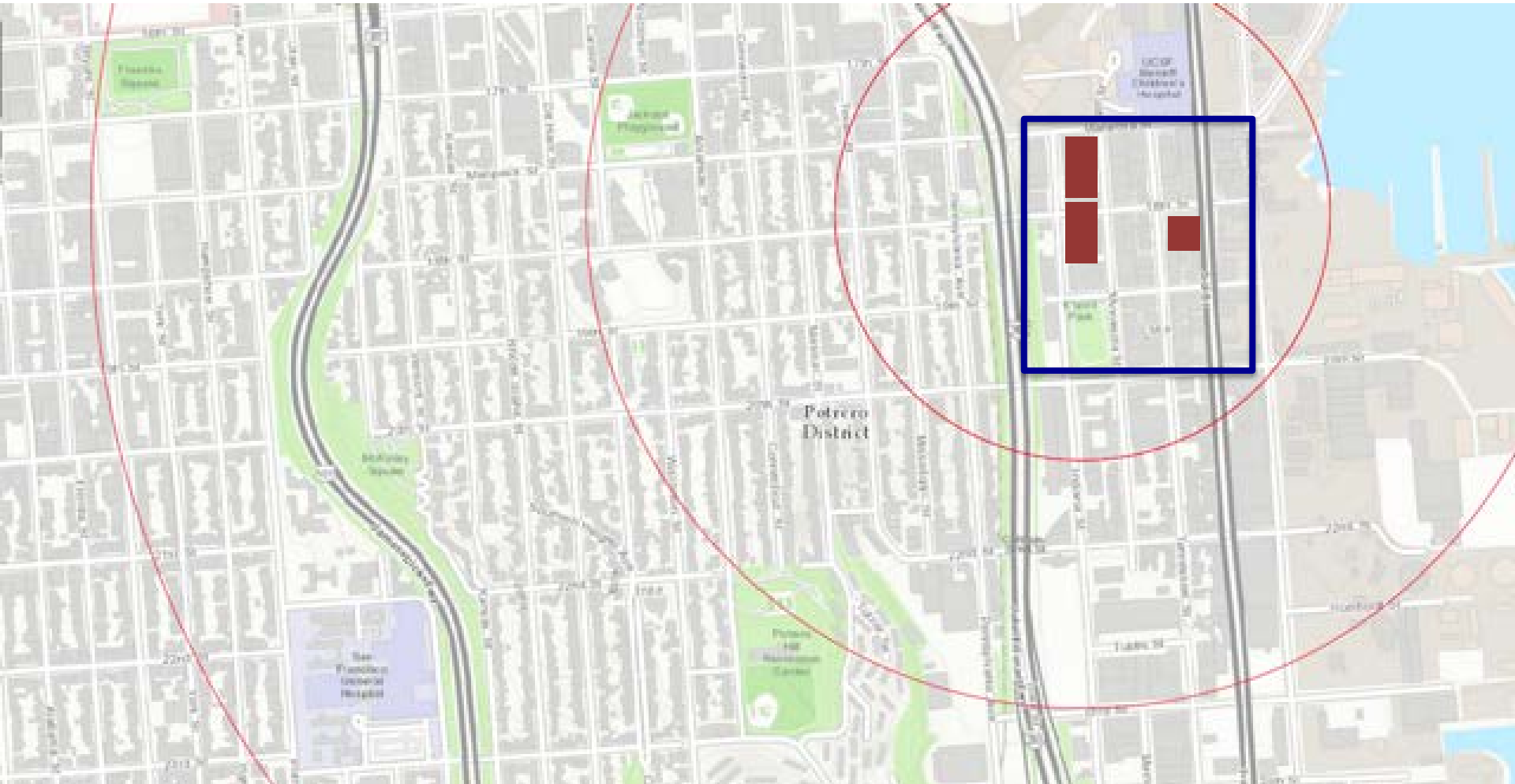
B. OPEN SPACE

22nd Street Connector Stairs



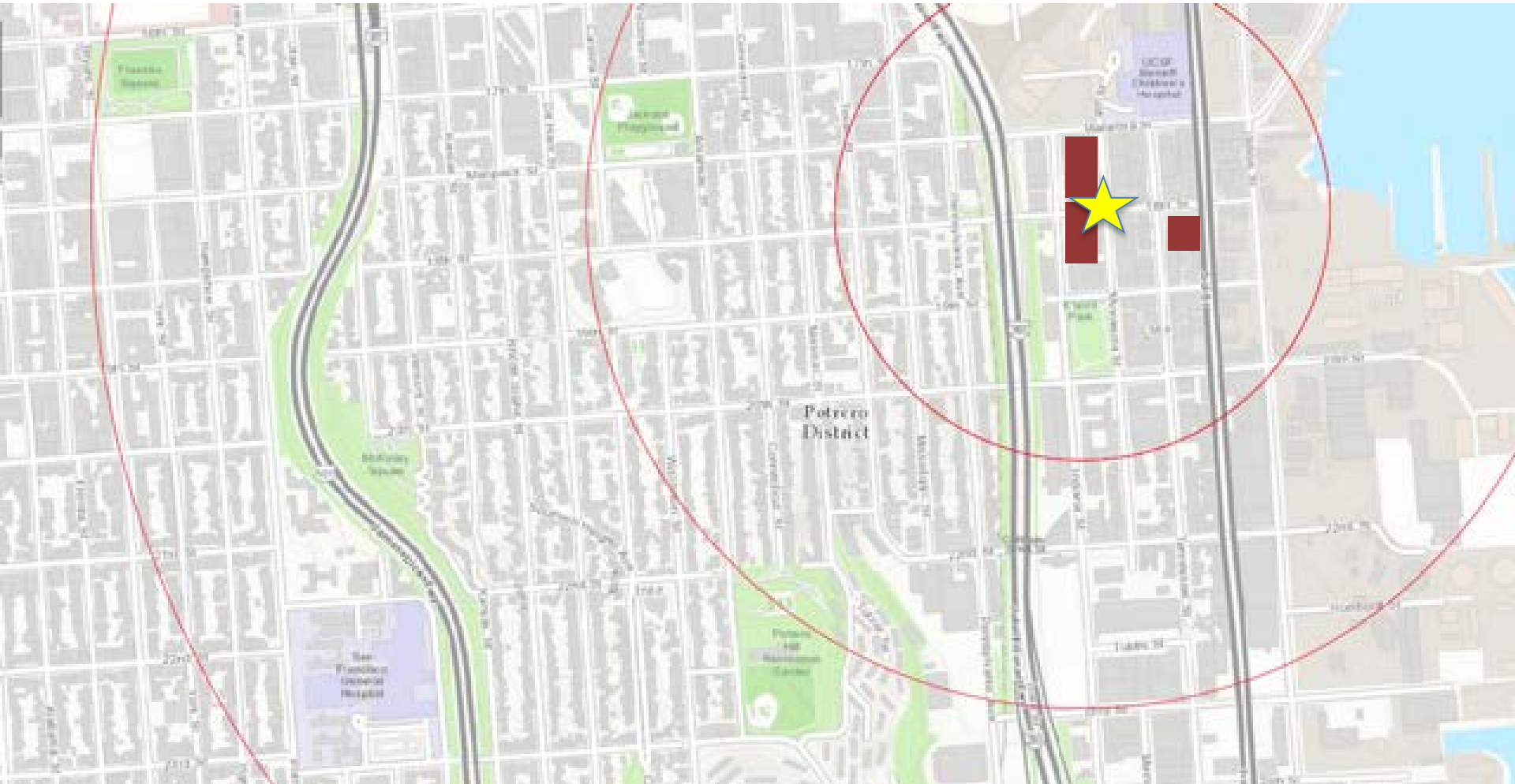
B. OPEN SPACE

Jackson Park



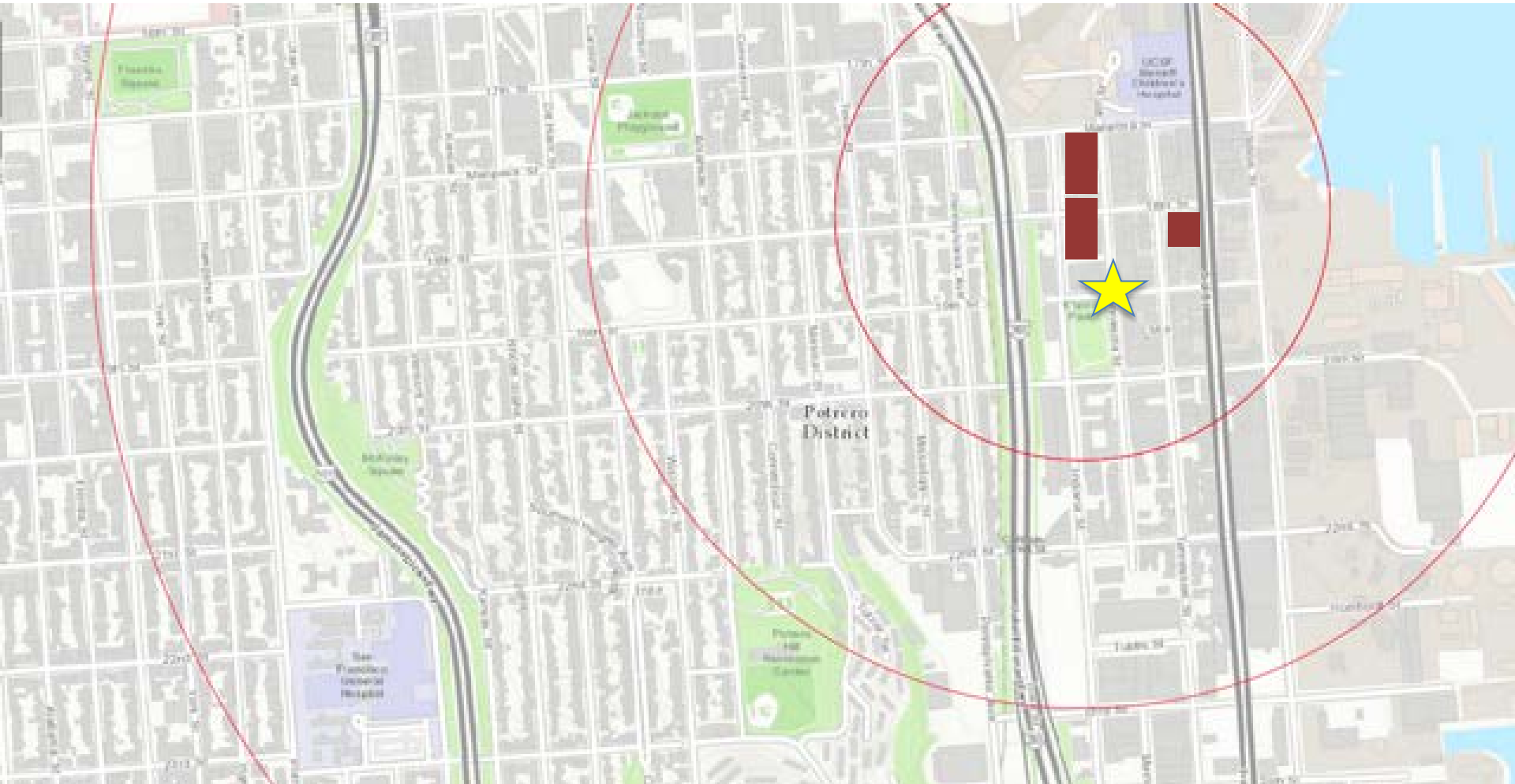
C. STREETSAPES

North Dogpatch Complete Streets



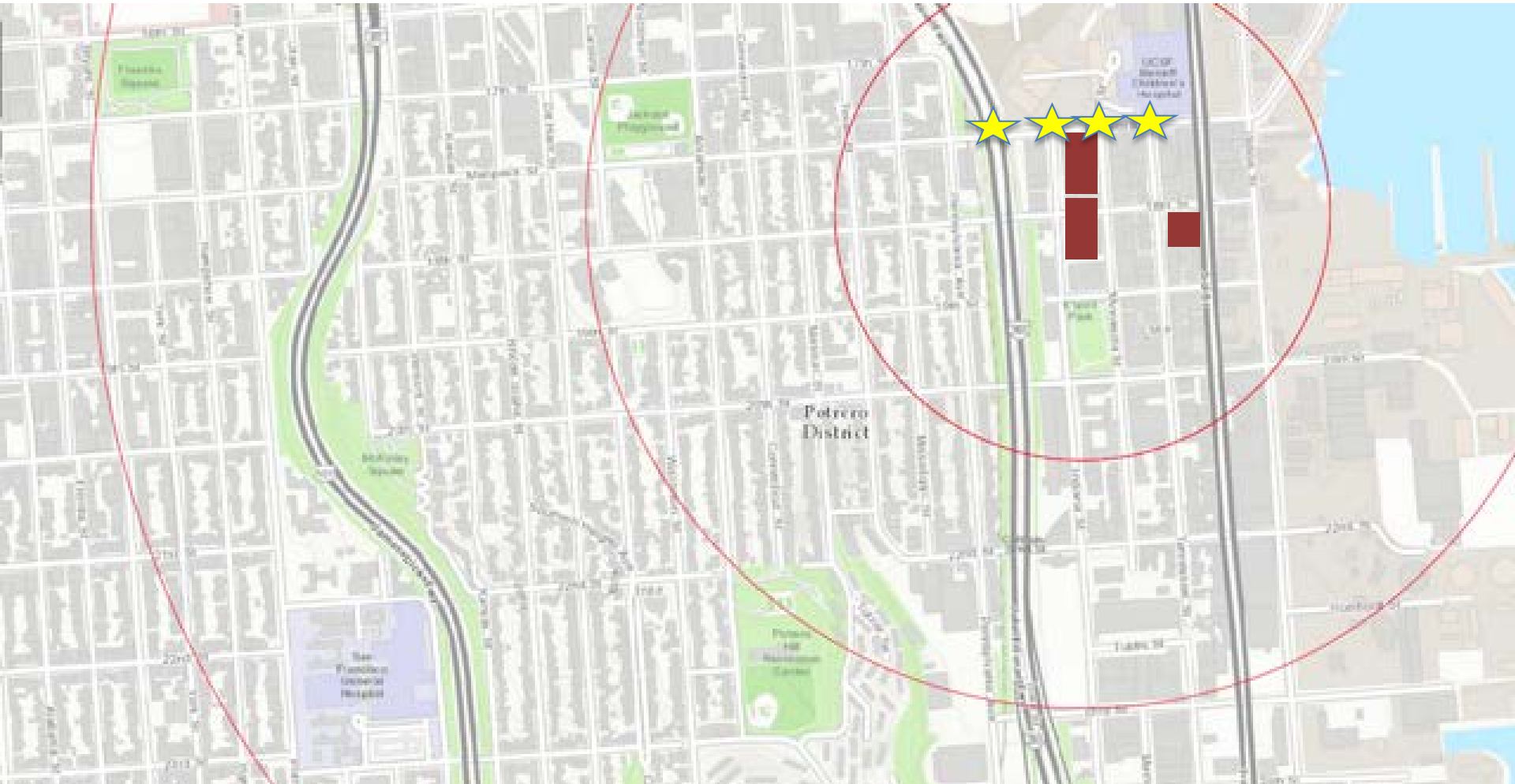
C. STREETSAPES

18th Street



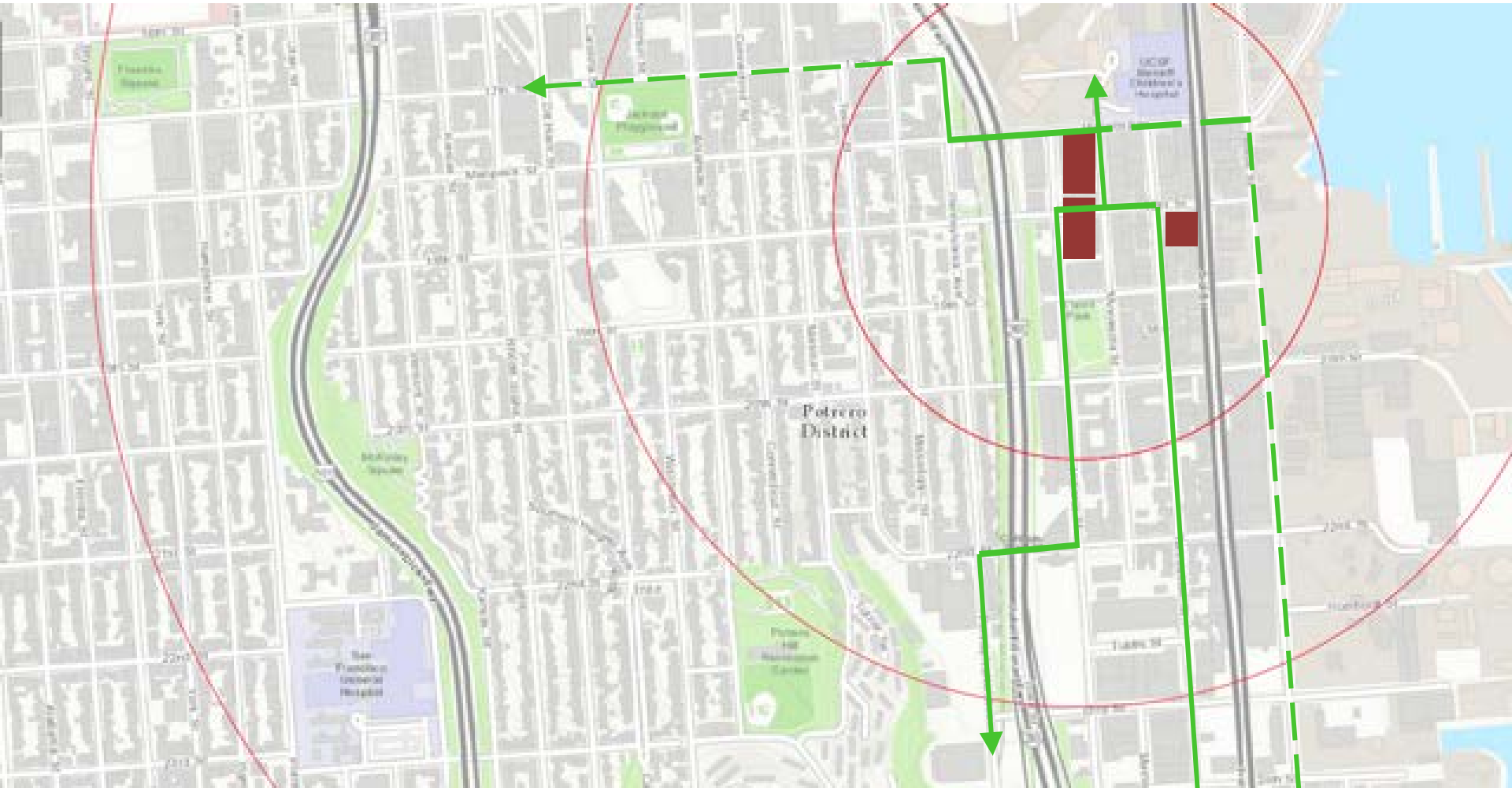
C. STREETSCAPES

19th Street



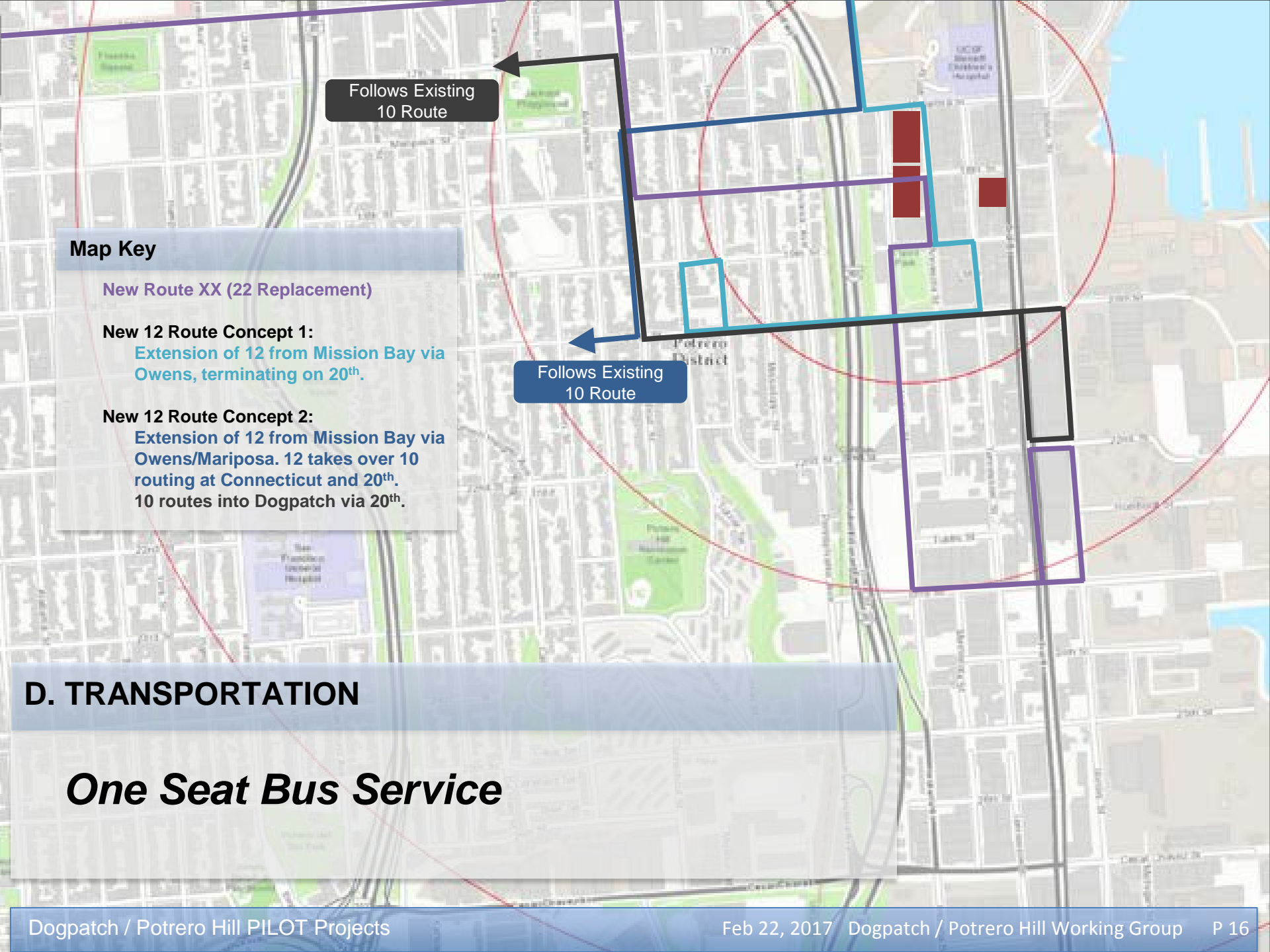
C. STREETSCAPES

Mariposa Crossings



D. TRANSPORTATION

Bike Route improvements



Follows Existing 10 Route

Follows Existing 10 Route

Map Key

New Route XX (22 Replacement)

New 12 Route Concept 1:
Extension of 12 from Mission Bay via Owens, terminating on 20th.

New 12 Route Concept 2:
Extension of 12 from Mission Bay via Owens/Mariposa. 12 takes over 10 routing at Connecticut and 20th. 10 routes into Dogpatch via 20th.

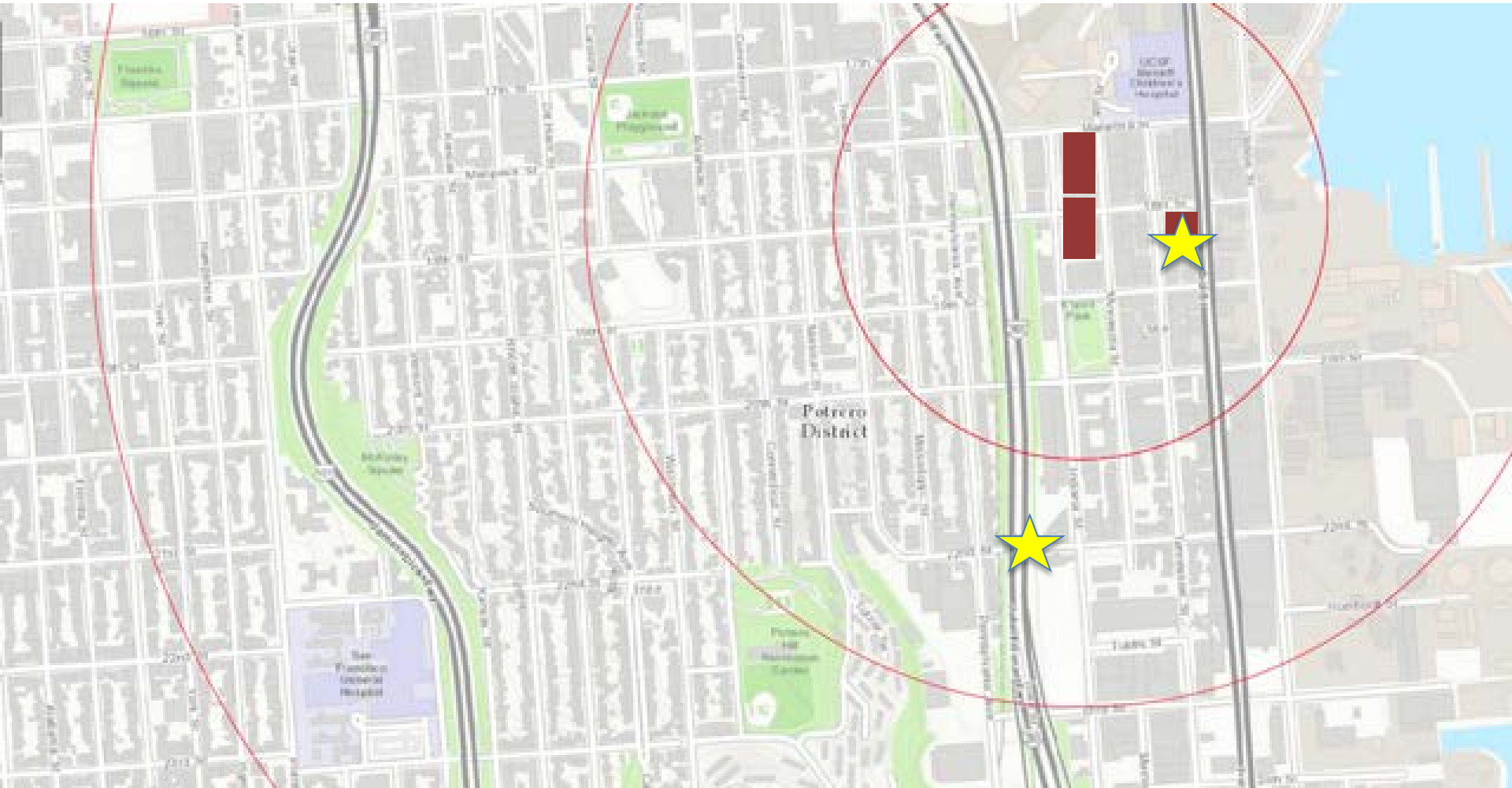
D. TRANSPORTATION

One Seat Bus Service



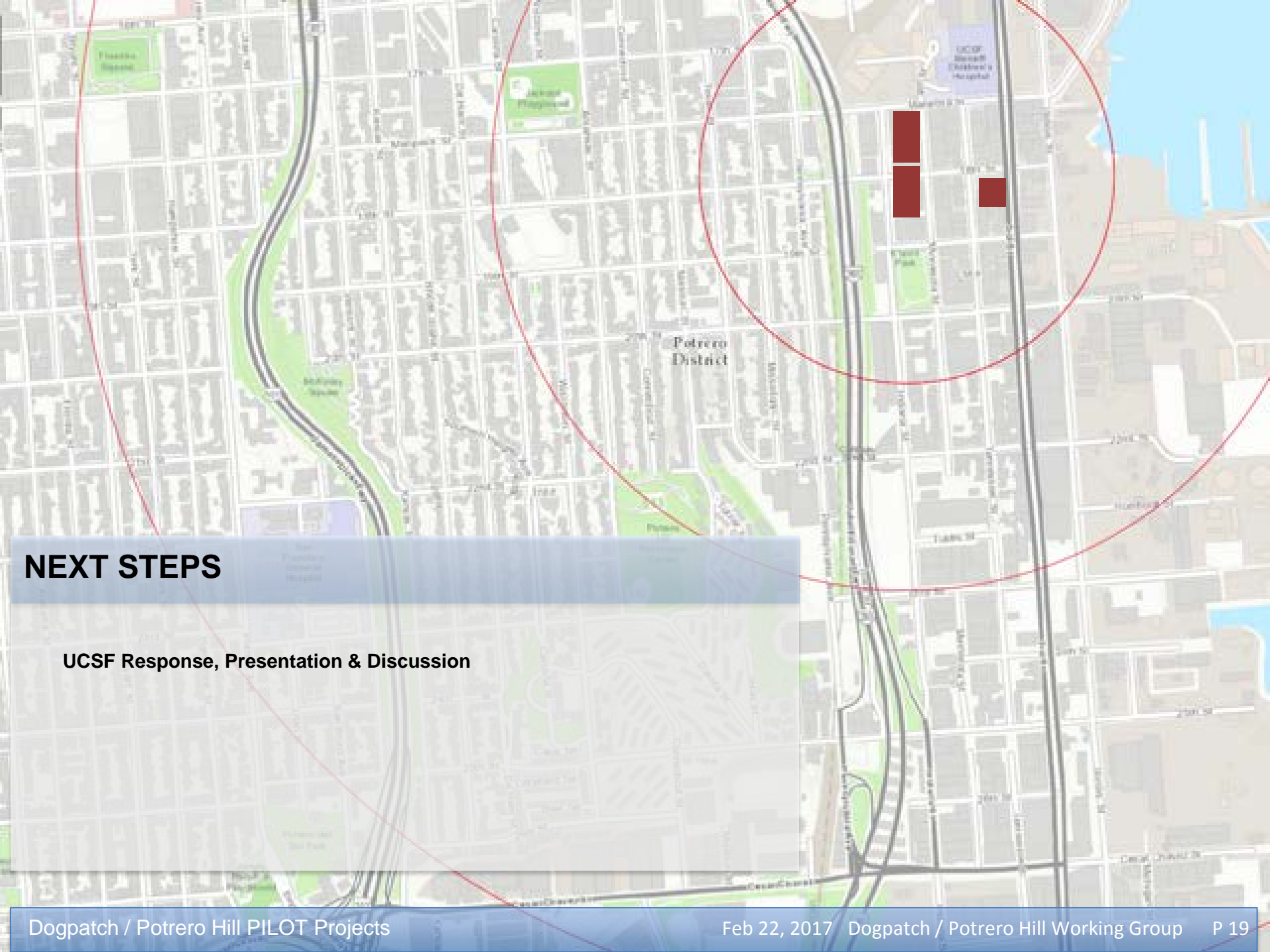
D. TRANSPORTATION

Water Ferry Service



D. TRANSPORTATION

Offset Negative Parking Impacts



NEXT STEPS

UCSF Response, Presentation & Discussion